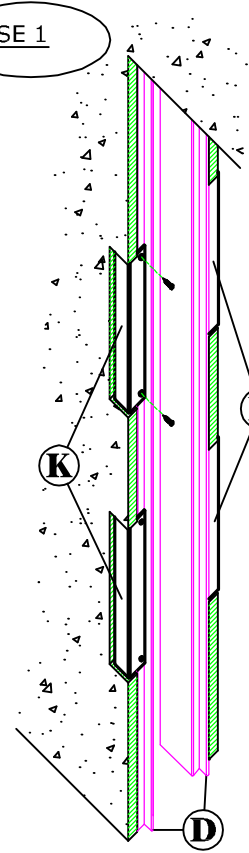
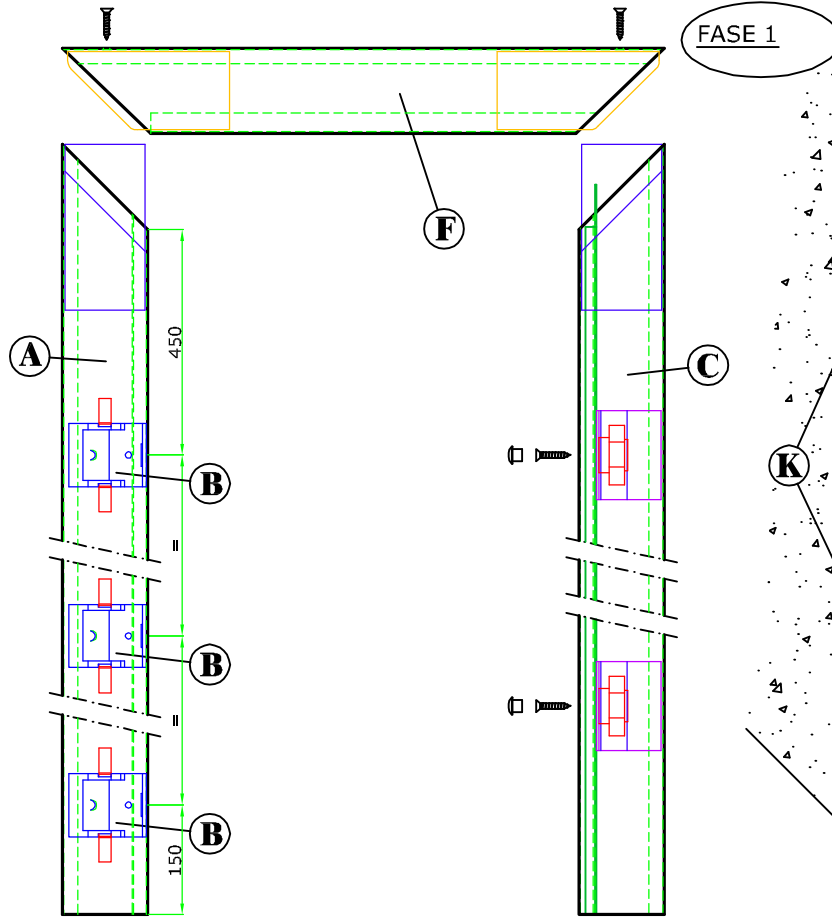
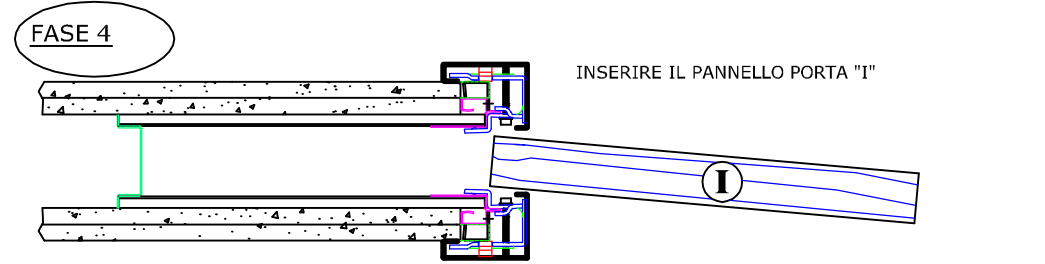
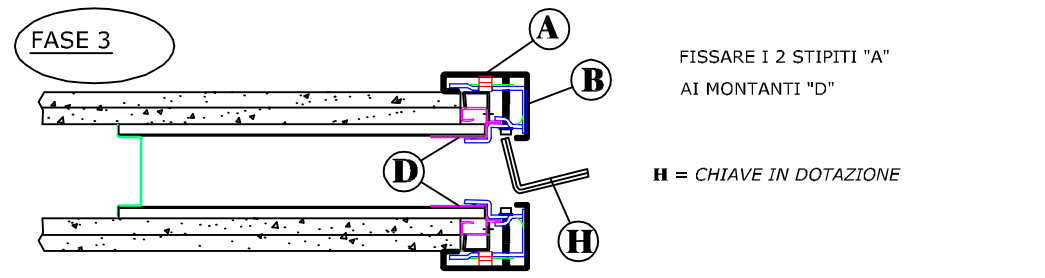
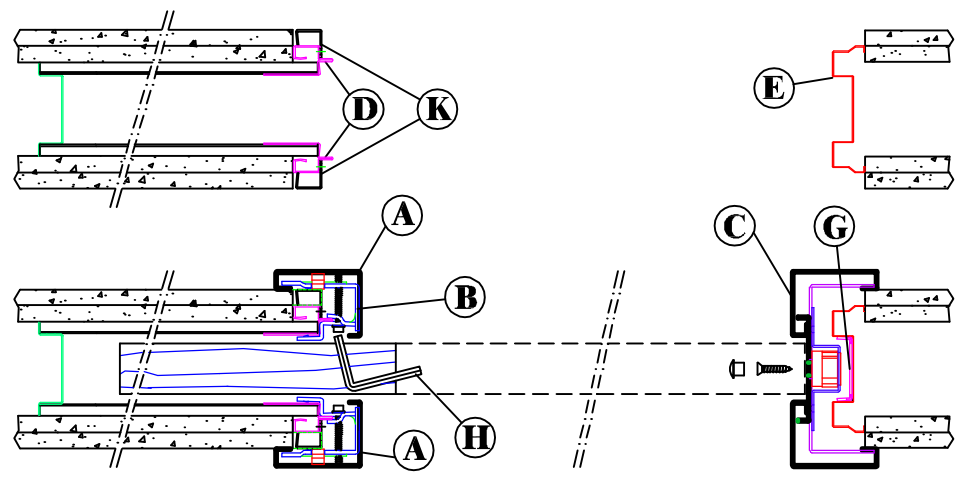
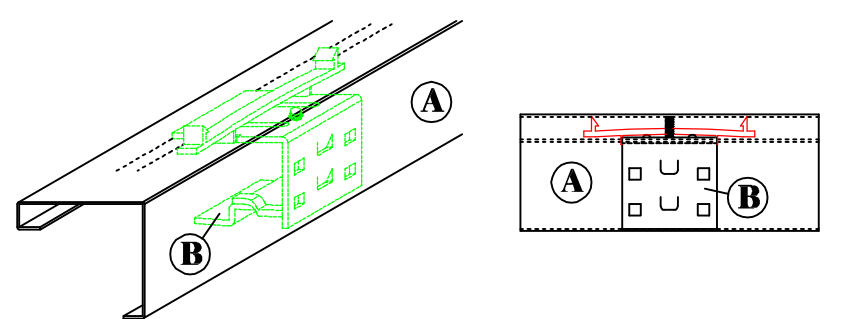
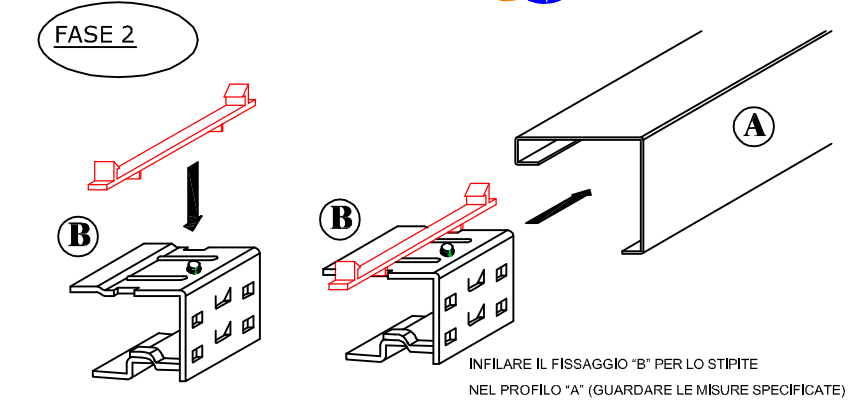


STIPITI IN LAMIERA

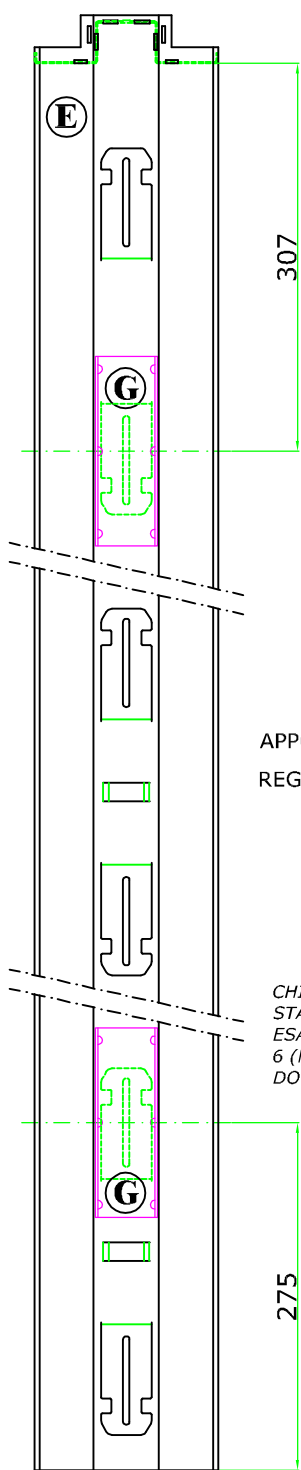
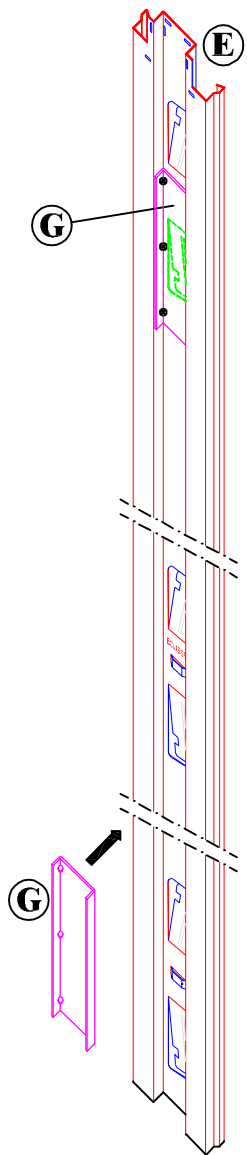


NELLA ZONA ANTERIORE SI PREGA DI EVITARE LA DOPPIA LAMINAZIONE PER RENDERE POSSIBILE IL MONTAGGIO DEL SUPPORTO PER LO STIPITE

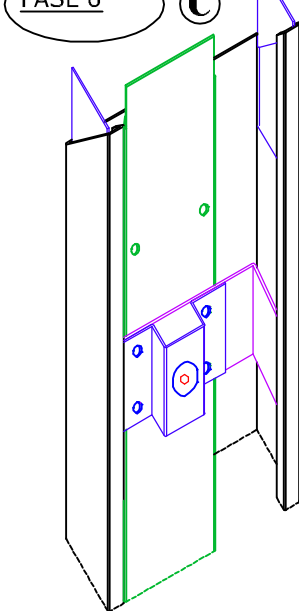


FASE 5

FISSARE "G" AD "E"
TRAMITE VITI AUTOFORANTI

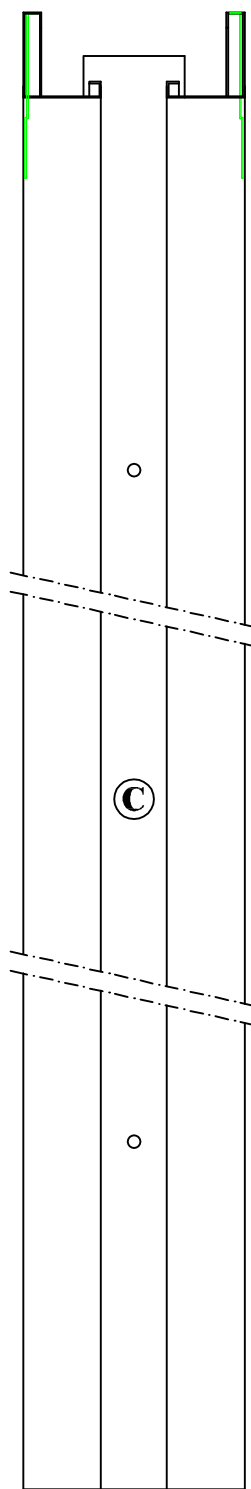
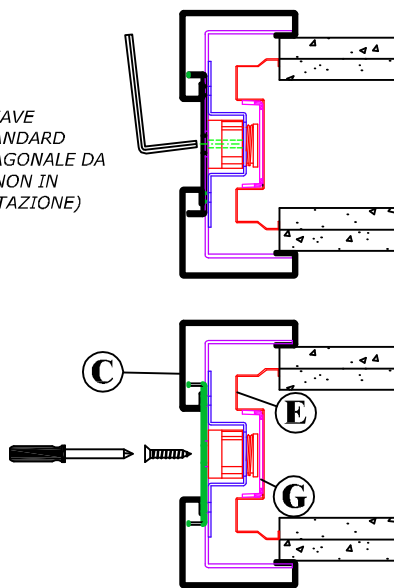


FASE 6



APPOGGIARE "C" AD "E",
REGOLARE IL DISTANZIATORE E FISSARE

CHIAVE
STANDARD
ESAGONALE DA
6 (NON IN
DOTAZIONE)



FASE 7

UNA VOLTA FISSATI I 2 STIPITI "A"
E LO STIPITE DI BATTUTA "C" SI
PROCEDE ALLA REGOLAZIONE DEL
PANNELLO PORTA "I"

FASE 8

POSIZIONARE "F" E AVVITARLO AGLI
STIPITI "A" E "C"

